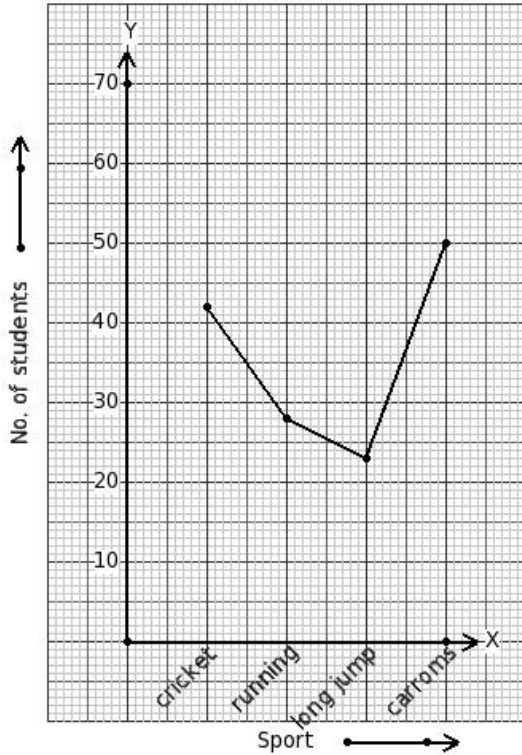


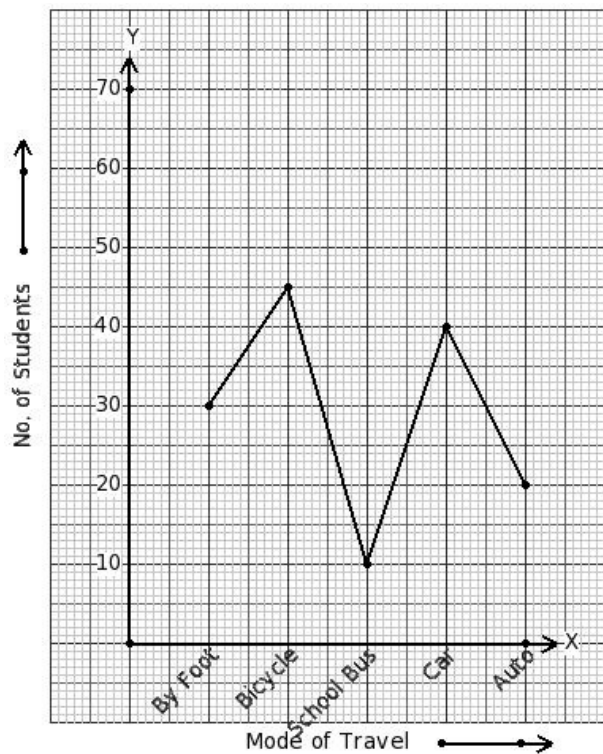


1. The following line graph gives data regarding the favourite sport of 143 students of a school. Identify the table for the given line graph.



- (i)
- | Sport | cricket | running | long jump | carroms |
|-----------------|---------|---------|-----------|---------|
| No. of students | 34 | 28 | 23 | 50 |
- (ii)
- | Sport | cricket | running | long jump | carroms |
|-----------------|---------|---------|-----------|---------|
| No. of students | 42 | 28 | 23 | 50 |
- (iii)
- | Sport | cricket | running | long jump | carroms |
|-----------------|---------|---------|-----------|---------|
| No. of students | 42 | 28 | 23 | 57 |
- (iv)
- | Sport | cricket | running | long jump | carroms |
|-----------------|---------|---------|-----------|---------|
| No. of students | 42 | 35 | 23 | 50 |
- (v)
- | Sport | cricket | running | long jump | carroms |
|-----------------|---------|---------|-----------|---------|
| No. of students | 42 | 28 | 16 | 50 |

2. 145 students of a school use different modes of travel to school. Identify the table for the given line graph.



(i)

Mode of Travel	By Foot	Bicycle	School Bus	Car	Auto
No. of Students	30	37	10	40	20

(ii)

Mode of Travel	By Foot	Bicycle	School Bus	Car	Auto
No. of Students	30	45	10	33	20

(iii)

Mode of Travel	By Foot	Bicycle	School Bus	Car	Auto
No. of Students	30	45	10	40	20

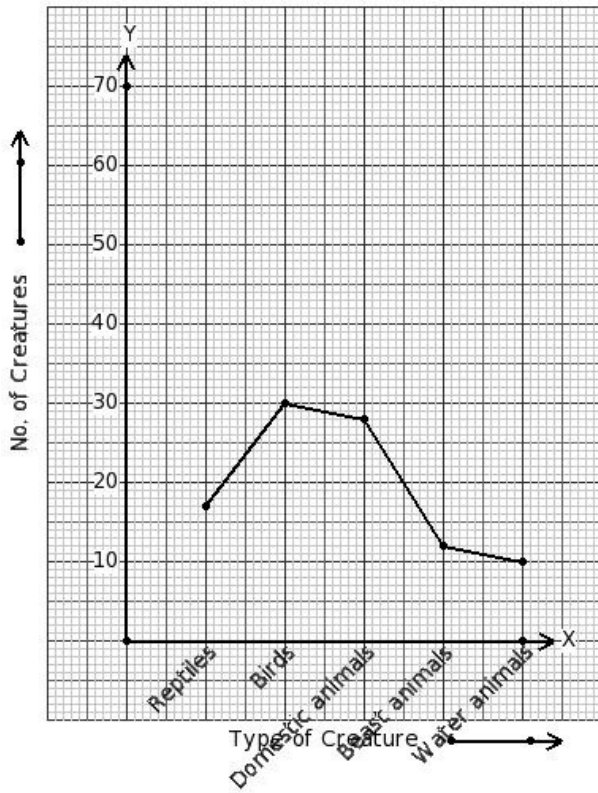
(iv)

Mode of Travel	By Foot	Bicycle	School Bus	Car	Auto
No. of Students	30	45	2	40	20

(v)

Mode of Travel	By Foot	Bicycle	School Bus	Car	Auto
No. of Students	30	45	10	40	27

3. There are 97 creatures in a zoo as shown in the line graph. Identify the table for the given line graph.



(i)

Type of Creature	Reptiles	Birds	Domestic animals	Beast animals	Water animals
No. of Creatures	17	30	28	12	16

(ii)

Type of Creature	Reptiles	Birds	Domestic animals	Beast animals	Water animals
No. of Creatures	17	23	28	12	10

(iii)

Type of Creature	Reptiles	Birds	Domestic animals	Beast animals	Water animals
No. of Creatures	17	30	28	12	10

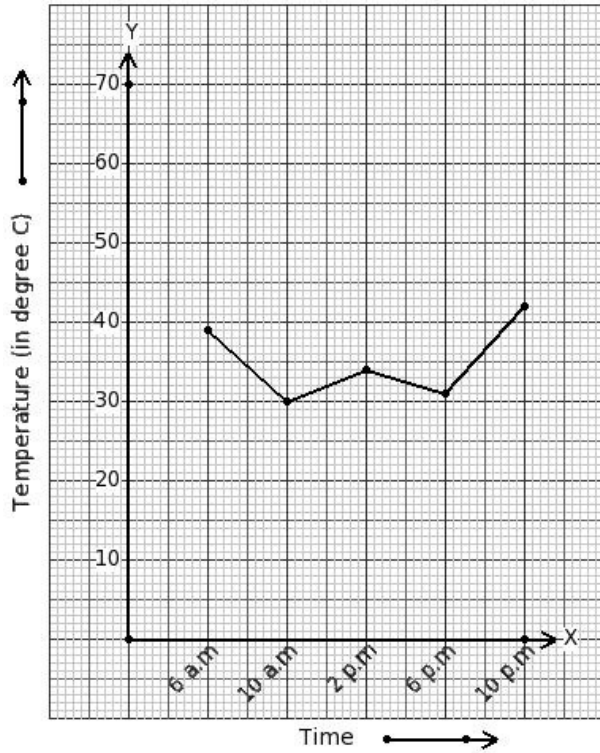
(iv)

Type of Creature	Reptiles	Birds	Domestic animals	Beast animals	Water animals
No. of Creatures	17	30	28	20	10

(v)

Type of Creature	Reptiles	Birds	Domestic animals	Beast animals	Water animals
No. of Creatures	17	30	20	12	10

4. Aruna fell sick. Her doctor maintained a record of her body temperature, taken every four hours. The following line graph gives data regarding her body temperature. Identify the table for the given line graph.



- (i)

Time	6 a.m.	10 a.m.	2 p.m.	6 p.m.	10 p.m.
Temperature (in degree C)	39	22	34	31	42
- (ii)

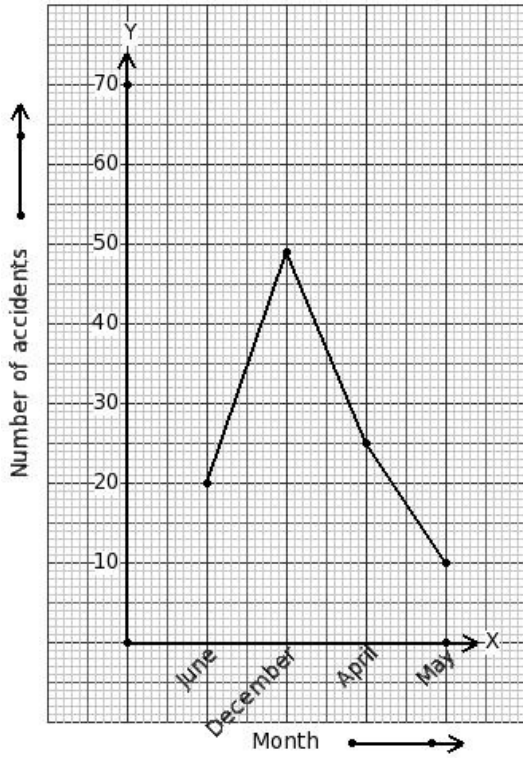
Time	6 a.m.	10 a.m.	2 p.m.	6 p.m.	10 p.m.
Temperature (in degree C)	39	30	34	31	42
- (iii)

Time	6 a.m.	10 a.m.	2 p.m.	6 p.m.	10 p.m.
Temperature (in degree C)	39	30	27	31	42
- (iv)

Time	6 a.m.	10 a.m.	2 p.m.	6 p.m.	10 p.m.
Temperature (in degree C)	39	30	34	31	48
- (v)

Time	6 a.m.	10 a.m.	2 p.m.	6 p.m.	10 p.m.
Temperature (in degree C)	39	30	34	39	42

5. Given below is a line graph showing the number of accidents in a city during the given months of a certain year. Identify the table for the given line graph.



(i)

Month	June	December	April	May
Number of accidents	13	49	25	10

(ii)

Month	June	December	April	May
Number of accidents	20	57	25	10

(iii)

Month	June	December	April	May
Number of accidents	20	49	17	10

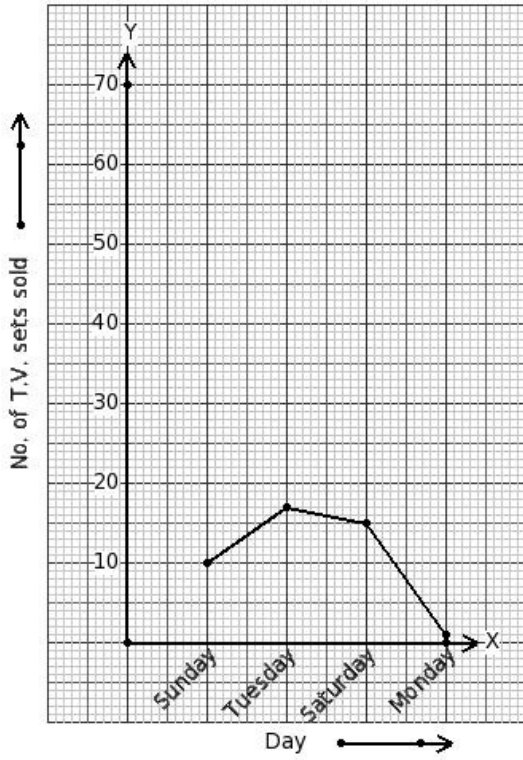
(iv)

Month	June	December	April	May
Number of accidents	20	49	25	10

(v)

Month	June	December	April	May
Number of accidents	20	49	25	18

6. The number of T.V. sets sold by a shop in a certain week is given below. Identify the table for the given line graph.



(i)

Day	Sunday	Tuesday	Saturday	Monday
No. of T.V. sets sold	10	17	9	1

(ii)

Day	Sunday	Tuesday	Saturday	Monday
No. of T.V. sets sold	10	17	15	8

(iii)

Day	Sunday	Tuesday	Saturday	Monday
No. of T.V. sets sold	10	25	15	1

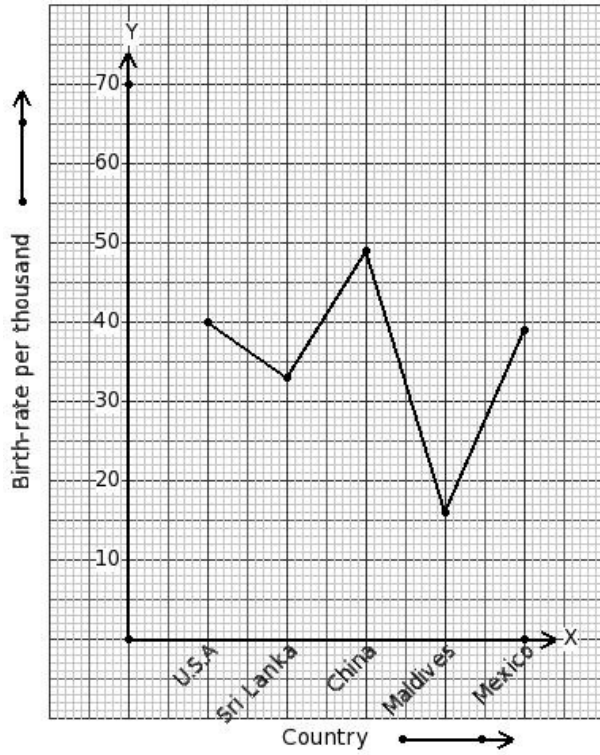
(iv)

Day	Sunday	Tuesday	Saturday	Monday
No. of T.V. sets sold	10	17	15	1

(v)

Day	Sunday	Tuesday	Saturday	Monday
No. of T.V. sets sold	2	17	15	1

7. The birth-rate per thousand of 5 countries over a period of time is shown below. Identify the table for the given line graph.



- (i)

Country	U.S.A	Sri Lanka	China	Maldives	Mexico
Birth-rate per thousand	40	33	49	16	47
- (ii)

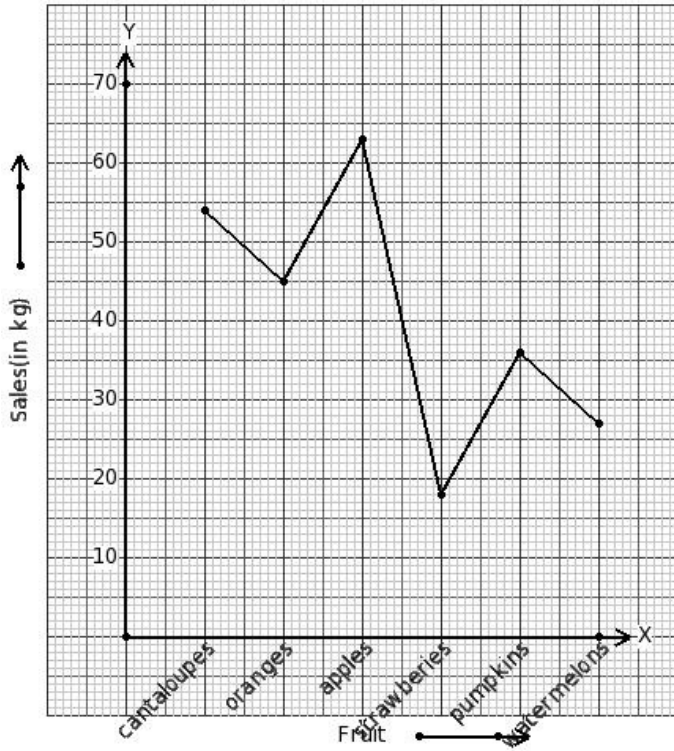
Country	U.S.A	Sri Lanka	China	Maldives	Mexico
Birth-rate per thousand	40	33	41	16	39
- (iii)

Country	U.S.A	Sri Lanka	China	Maldives	Mexico
Birth-rate per thousand	40	33	49	16	39
- (iv)

Country	U.S.A	Sri Lanka	China	Maldives	Mexico
Birth-rate per thousand	40	33	49	24	39
- (v)

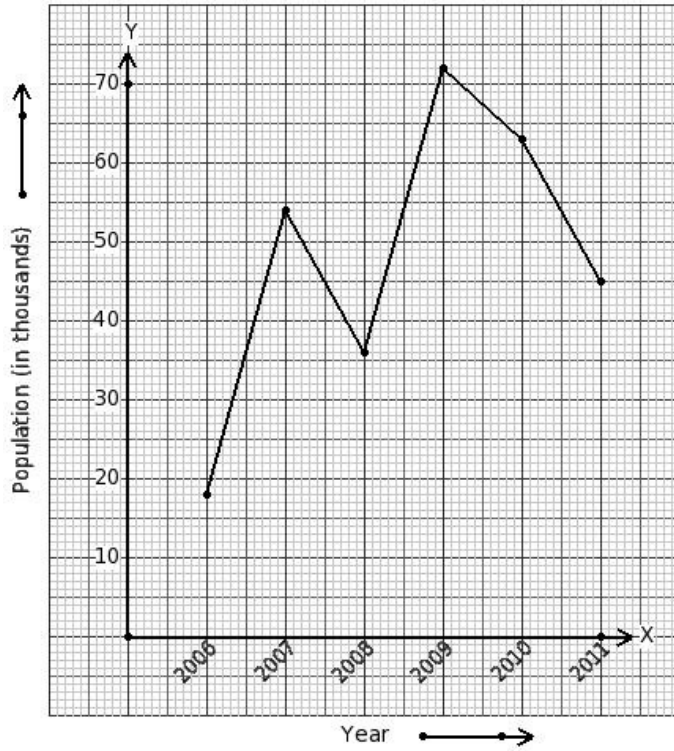
Country	U.S.A	Sri Lanka	China	Maldives	Mexico
Birth-rate per thousand	40	39	49	16	39

8. The below graph gives a comparative account of sales(in kg) of various fruits on a certain day. Identify the table for the given line graph.



- (i)
- | Fruit | cantaloupes | oranges | apples | strawberries | pumpkins | watermelons |
|--------------|-------------|---------|--------|--------------|----------|-------------|
| Sales(in kg) | 54 | 45 | 63 | 18 | 43 | 27 |
- (ii)
- | Fruit | cantaloupes | oranges | apples | strawberries | pumpkins | watermelons |
|--------------|-------------|---------|--------|--------------|----------|-------------|
| Sales(in kg) | 54 | 37 | 63 | 18 | 36 | 27 |
- (iii)
- | Fruit | cantaloupes | oranges | apples | strawberries | pumpkins | watermelons |
|--------------|-------------|---------|--------|--------------|----------|-------------|
| Sales(in kg) | 54 | 45 | 63 | 11 | 36 | 27 |
- (iv)
- | Fruit | cantaloupes | oranges | apples | strawberries | pumpkins | watermelons |
|--------------|-------------|---------|--------|--------------|----------|-------------|
| Sales(in kg) | 54 | 45 | 55 | 18 | 36 | 27 |
- (v)
- | Fruit | cantaloupes | oranges | apples | strawberries | pumpkins | watermelons |
|--------------|-------------|---------|--------|--------------|----------|-------------|
| Sales(in kg) | 54 | 45 | 63 | 18 | 36 | 27 |

9. Population (in thousands) of men and women in a village in different years. Identify the table for the given line graph.



(i)

Year	2006	2007	2008	2009	2010	2011
Population (in thousands)	18	47	36	72	63	45

(ii)

Year	2006	2007	2008	2009	2010	2011
Population (in thousands)	18	54	36	72	63	45

(iii)

Year	2006	2007	2008	2009	2010	2011
Population (in thousands)	18	54	36	72	70	45

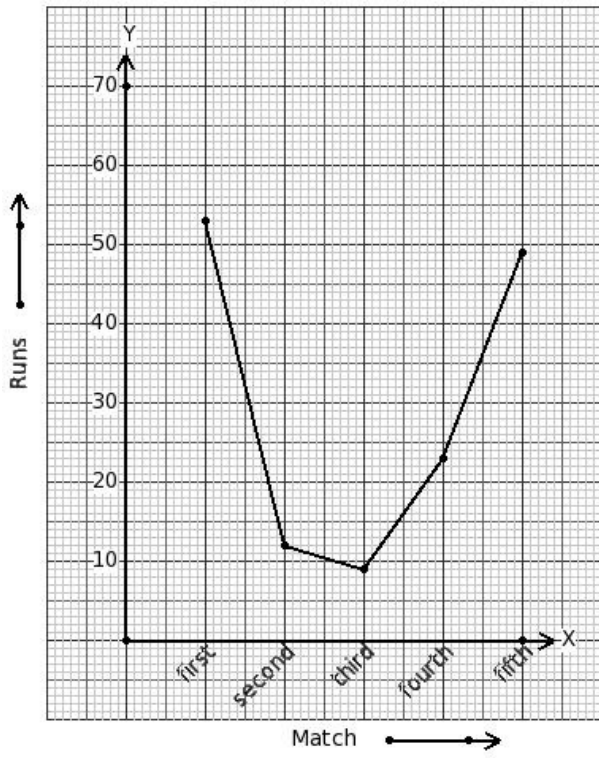
(iv)

Year	2006	2007	2008	2009	2010	2011
Population (in thousands)	18	54	36	65	63	45

(v)

Year	2006	2007	2008	2009	2010	2011
Population (in thousands)	18	54	29	72	63	45

10. Scores made by Prasad in 5 test matches are shown below. Identify the table for the given line graph.



(i)

Match	first	second	third	fourth	fifth
Runs	53	12	9	23	49

(ii)

Match	first	second	third	fourth	fifth
Runs	53	6	9	23	49

(iii)

Match	first	second	third	fourth	fifth
Runs	53	12	9	15	49

(iv)

Match	first	second	third	fourth	fifth
Runs	53	12	9	23	41

(v)

Match	first	second	third	fourth	fifth
Runs	53	12	1	23	49

Assignment Key

1) (ii)

2) (iii)

3) (iii)

4) (ii)

5) (iv)

6) (iv)

7) (iii)

8) (v)

9) (ii)

10) (i)