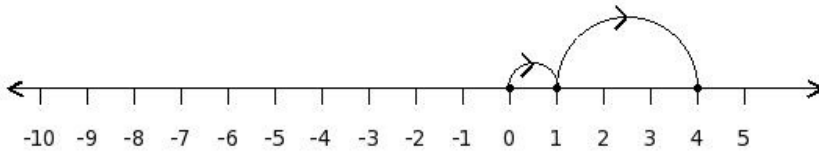


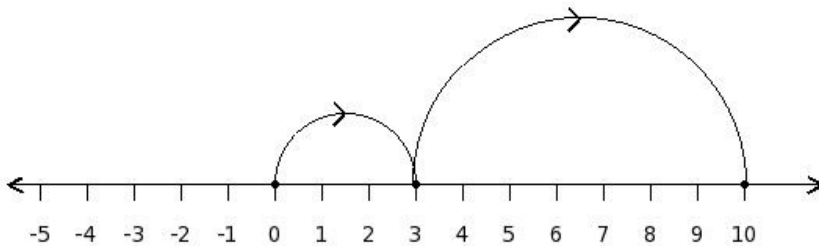


1. Find the equation representing the following number line diagram



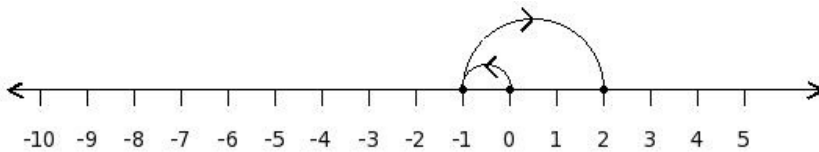
- (i) $1+3=4$ (ii) $3-3=0$ (iii) $2+5=7$ (iv) $0+3=3$ (v) $1-6=(-5)$

2. Find the equation representing the following number line diagram



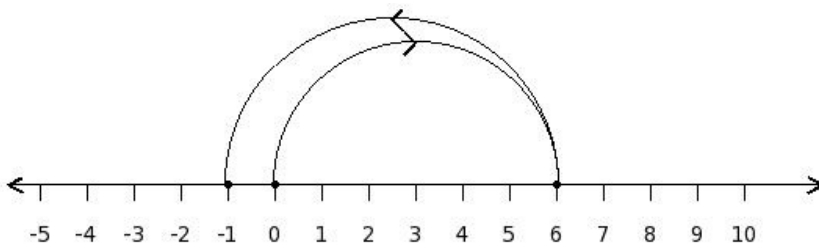
- (i) $4+9=13$ (ii) $2+7=9$ (iii) $3-10=(-7)$ (iv) $3+7=10$ (v) $5-7=(-2)$

3. Find the equation representing the following number line diagram



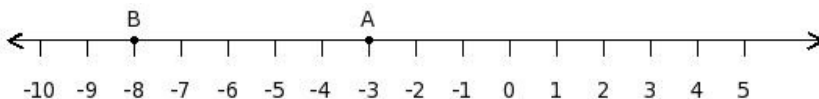
- (i) $(-2)+3=1$ (ii) $(-1)+3=2$ (iii) $1-3=(-2)$ (iv) $(-1)-6=(-7)$ (v) $0+5=5$

4. Find the equation representing the following number line diagram



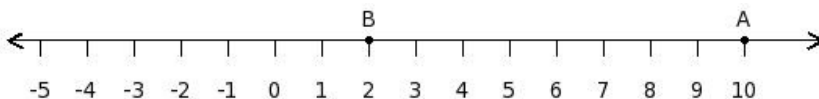
- (i) $6-7=(-1)$ (ii) $7+9=16$ (iii) $6-10=(-4)$ (iv) $5+7=12$ (v) $8-7=1$

5. Find the difference between the values of numbers at point A and B



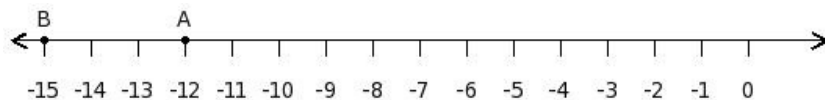
- (i) 8 (ii) 5 (iii) 6 (iv) 2 (v) 4

6. Find the difference between the values of numbers at point A and B



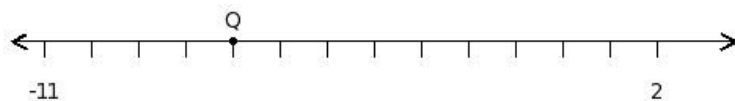
- (i) 5 (ii) 9 (iii) 7 (iv) 10 (v) 8

7. Find the difference between the values of numbers at point A and B



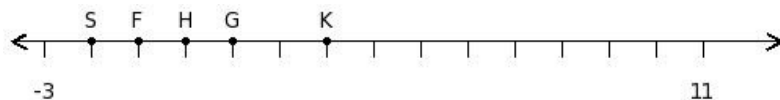
- (i) 2 (ii) 5 (iii) 3 (iv) 1 (v) 4

8. Find the number at the point labelled with letter Q



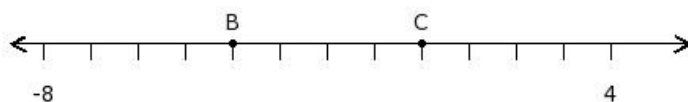
- (i) (-4) (ii) (-8) (iii) (-7) (iv) (-10) (v) (-6)

9. Find the letter of the label representing the position of number 1



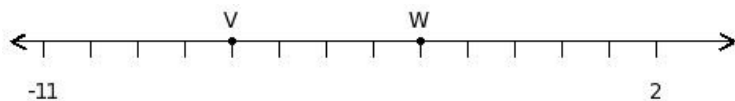
- (i) G (ii) F (iii) S (iv) K (v) H

10. Find the sum of the two numbers at the points labelled with letters B and C



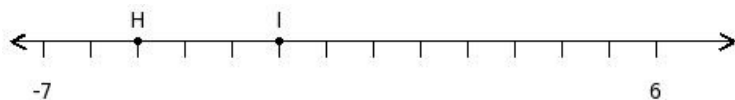
- (i) (-5) (ii) (-6) (iii) (-1) (iv) (-4) (v) (-3)

11. Find the difference of the two numbers at the points labelled with letters V and W



- (i) (-3) (ii) (-5) (iii) (-4) (iv) (-7) (v) (-1)

12. Find the product of the two numbers at the points labelled with letters H and I



- (i) 12 (ii) 10 (iii) 7 (iv) 9 (v) 11

13. Which of the following integers lie between 42 and 48?

- (i) 49 (ii) 38 (iii) 52 (iv) 45 (v) 41

14. Which of the following is true?

- a) -6 is to the left of -5 on the number line
b) -5 is to the right of 6 on the number line
c) -5 is to the left of 6 on the number line
d) -6 is to the right of -5 on the number line

- (i) {b,c,a} (ii) {b,d,a} (iii) {a,c} (iv) {d,c} (v) {b,a}

15. Which of the following is true?

- a) -9 is to the right of -6 on the number line
- b) -7 is to the right of 5 on the number line
- c) -6 is to the left of 5 on the number line
- d) -9 is to the left of -7 on the number line

(i) {a,d,c} (ii) {b,d} (iii) {c,d} (iv) {a,c} (v) {a,b,c}

Assignment Key

1) (i)	2) (iv)	3) (ii)	4) (i)	5) (ii)	6) (v)
7) (iii)	8) (iii)	9) (i)	10) (iv)	11) (iii)	12) (ii)
13) (iv)	14) (iii)	15) (iii)			

Copyright © Small Systems Computing Pvt. Ltd.