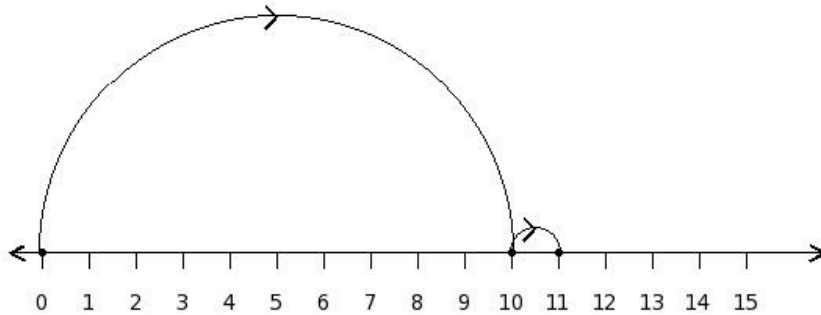


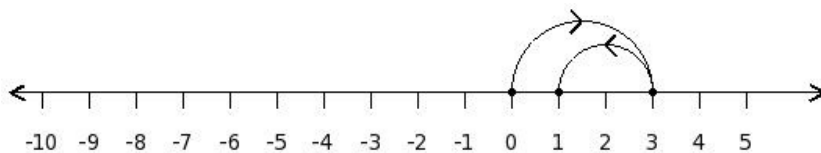


1. Find the equation representing the following number line diagram



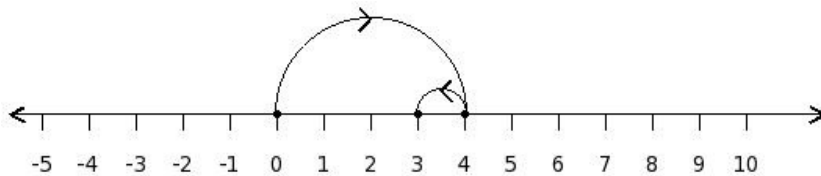
- (i) $9+1=10$ (ii) $12-1=11$ (iii) $10+1=11$ (iv) $10-4=6$ (v) $11+3=14$

2. Find the equation representing the following number line diagram



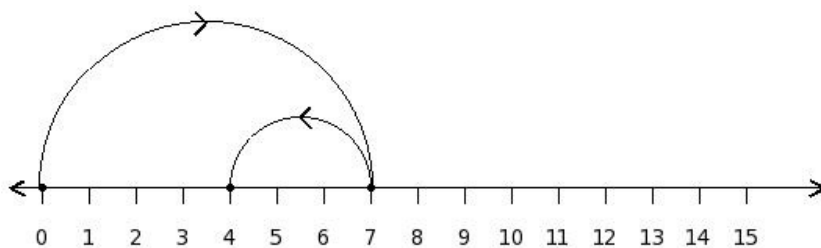
- (i) $5-2=3$ (ii) $4+4=8$ (iii) $3-2=1$ (iv) $2+2=4$ (v) $3-5=(-2)$

3. Find the equation representing the following number line diagram



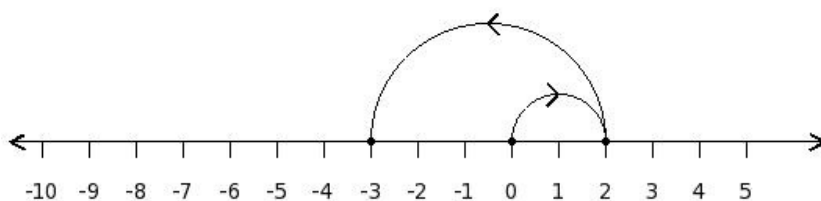
- (i) $3+1=4$ (ii) $4-4=0$ (iii) $5+3=8$ (iv) $6-1=5$ (v) $4-1=3$

4. Find the equation representing the following number line diagram



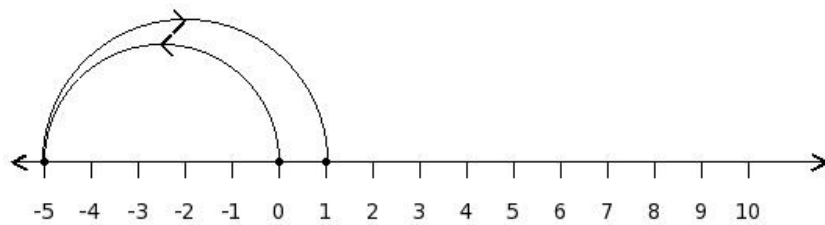
- (i) $7-3=4$ (ii) $7-6=1$ (iii) $6+3=9$ (iv) $9-3=6$ (v) $8+5=13$

5. Find the equation representing the following number line diagram



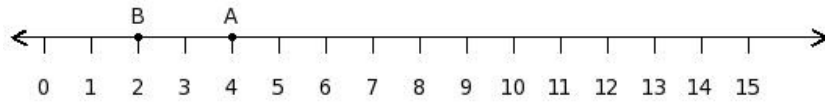
- (i) $1+5=6$ (ii) $4-5=(-1)$ (iii) $2-8=(-6)$ (iv) $2-5=(-3)$ (v) $3+7=10$

6. Find the equation representing the following number line diagram



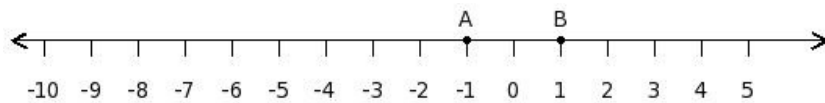
- (i) $(-6)+6=0$ (ii) $(-3)-6=(-9)$ (iii) $(-5)-9=(-14)$ (iv) $(-4)+8=4$ (v) $(-5)+6=1$

7. Find the difference between the values of numbers at point A and B



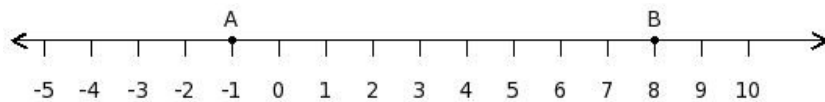
- (i) 2 (ii) 3 (iii) (-1) (iv) 5 (v) 1

8. Find the difference between the values of numbers at point A and B



- (i) 1 (ii) (-3) (iii) (-2) (iv) (-1) (v) (-4)

9. Find the difference between the values of numbers at point A and B



- (i) (-9) (ii) (-8) (iii) (-10) (iv) (-7) (v) (-12)

10. Find the difference between the values of numbers at point A and B



- (i) 11 (ii) 7 (iii) 10 (iv) 9 (v) 8

Assignment Key

1) (iii)

2) (iii)

3) (v)

4) (i)

5) (iv)

6) (v)

7) (i)

8) (iii)

9) (i)

10) (iv)

Copyright © Small Systems Computing Pvt. Ltd.