



1. The value of $1 - 4$ is

- (i) (-4) (ii) (-3) (iii) (-6) (iv) 0 (v) (-2)

2. What is the preceding number of 314?

- (i) 314 (ii) 316 (iii) 312 (iv) 313 (v) 311

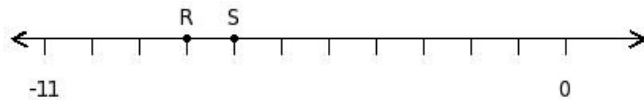
3. What is the succeeding number of 334?

- (i) 338 (ii) 332 (iii) 335 (iv) 336 (v) 334

4. The value of $13 - 19 - 1 - 8$ is

- (i) (-12) (ii) (-14) (iii) (-15) (iv) (-17) (v) (-16)

5. Find the sum of the two numbers at the points labelled with letters R and S



- (i) (-16) (ii) (-15) (iii) (-14) (iv) (-13) (v) (-17)

6. Sort the following integers in ascending order

-14 20 14 -7 -16 1

- (i) -16 -14 -7 1 14 20 (ii) 1 -14 -7 14 20 -16 (iii) 1 14 -14 -7 20 -16 (iv) -16 -14 14 20 -7 1
(v) -7 1 -14 -16 14 20

7. $971 =$

- (i) $70+1$ (ii) $900+1$ (iii) $900+70$ (iv) $900+70+1$

8. What is the preceding number of 207?

- (i) 207 (ii) 205 (iii) 204 (iv) 206 (v) 208

9. The value of $0 - 17 - 13 - 55$ is

- (i) (-83) (ii) (-84) (iii) (-85) (iv) (-87) (v) (-86)

10. Find the difference between the values of numbers at point A and B

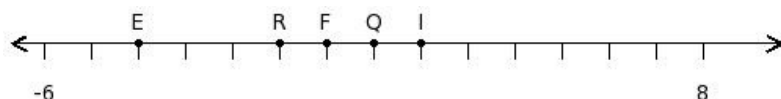


- (i) 0 (ii) 3 (iii) 6 (iv) 2 (v) 4

11. Sort the following integers in descending order
 $-7,42,513$ $21,39,521$ $34,555$ $-24,29,737$ $-18,99,474$ $1,44,754$
- (i) $-18,99,474$ $34,555$ $21,39,521$ $-7,42,513$ $1,44,754$ $-24,29,737$
- (ii) $-7,42,513$ $-18,99,474$ $34,555$ $-24,29,737$ $1,44,754$ $21,39,521$
- (iii) $34,555$ $-24,29,737$ $-18,99,474$ $1,44,754$ $21,39,521$ $-7,42,513$
- (iv) $21,39,521$ $1,44,754$ $34,555$ $-7,42,513$ $-18,99,474$ $-24,29,737$
- (v) $21,39,521$ $-24,29,737$ $34,555$ $1,44,754$ $-18,99,474$ $-7,42,513$

12. The value of $0 - 5$ is
- (i) (-7) (ii) (-5) (iii) (-3) (iv) (-4) (v) (-6)

13. Find the letter of the label representing the position of number -1



- (i) F (ii) R (iii) I (iv) Q (v) E

14. Which of the following integers lie between 11 and 14?

- (i) 12 (ii) 19 (iii) 9 (iv) 15 (v) 6

15. The value of $16 + 15 + 1 - 3$ is

- (i) 32 (ii) 28 (iii) 27 (iv) 29 (v) 30

16. The value of $14 + 13 + 8$ is

- (i) 35 (ii) 32 (iii) 37 (iv) 36 (v) 34

17. The value of $17 - 17$ is

- (i) (-1) (ii) 2 (iii) (-3) (iv) 1 (v) 0

18. $12 - \underline{\hspace{1cm}} = (-5)$

- (i) 17 (ii) 18 (iii) 16 (iv) 20 (v) 14

19. Sort the following integers in ascending order

- $2,452,066$ $3,273,893$ $995,717$ $-701,072$ $4,873,276$ $-1,644,310$
- (i) $3,273,893$ $4,873,276$ $-1,644,310$ $995,717$ $-701,072$ $2,452,066$
- (ii) $-701,072$ $3,273,893$ $4,873,276$ $995,717$ $2,452,066$ $-1,644,310$
- (iii) $-1,644,310$ $-701,072$ $995,717$ $2,452,066$ $3,273,893$ $4,873,276$
- (iv) $2,452,066$ $995,717$ $-701,072$ $-1,644,310$ $4,873,276$ $3,273,893$
- (v) $4,873,276$ $2,452,066$ $3,273,893$ $995,717$ $-701,072$ $-1,644,310$

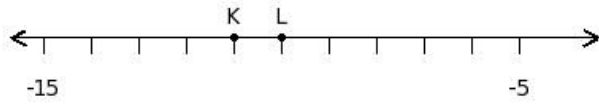
20. $7,351 =$

- (i) $7000+300+1$ (ii) $300+50+1$ (iii) $7000+50+1$ (iv) $7000+300+50$ (v) $7000+300+50+1$

21. The value of $9 + 19$ is

- (i) 26 (ii) 29 (iii) 27 (iv) 30 (v) 28

22. Find the difference of the two numbers at the points labelled with letters K and L



- (i) (-4) (ii) (-1) (iii) 1 (iv) (-2) (v) 0

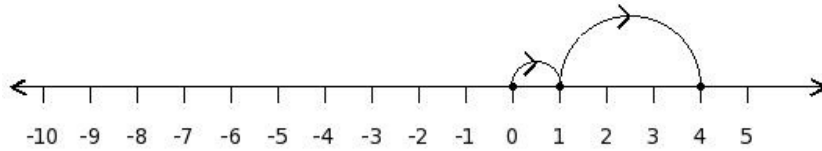
23. $17 + \underline{\quad} = 35$

- (i) 18 (ii) 15 (iii) 19 (iv) 17 (v) 21

24. The value of $0 + 38 + 58 + 40$ is

- (i) 138 (ii) 136 (iii) 137 (iv) 134 (v) 135

25. Find the equation representing the following number line diagram



- (i) $1 - 6 = (-5)$ (ii) $0 + 3 = 3$ (iii) $3 - 3 = 0$ (iv) $2 + 5 = 7$ (v) $1 + 3 = 4$

Assignment Key

1) (ii)	2) (iv)	3) (iii)	4) (iii)	5) (ii)	6) (i)
7) (iv)	8) (iv)	9) (iii)	10) (ii)	11) (iv)	12) (ii)
13) (ii)	14) (i)	15) (iv)	16) (i)	17) (v)	18) (i)
19) (iii)	20) (v)	21) (v)	22) (ii)	23) (i)	24) (ii)
25) (v)					